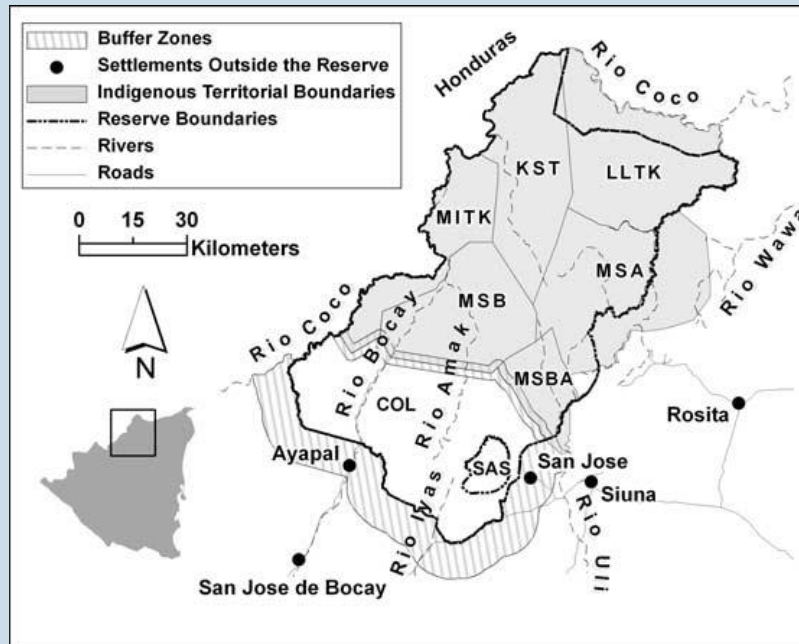


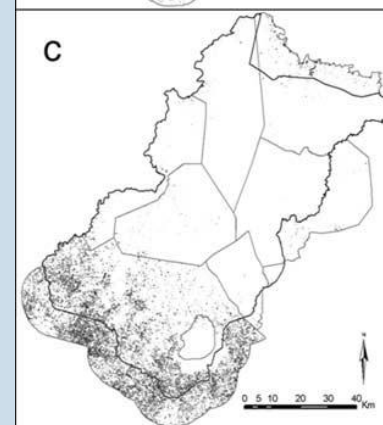
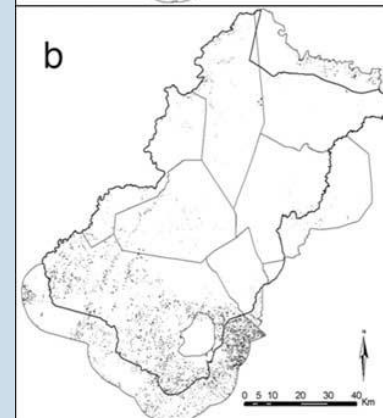
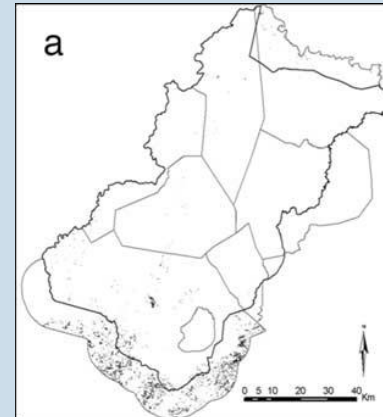
ELINOR OSTROM'S
7+1 DESIGN
PRINCIPLES
CHARACTERISING
ROBUST COMMON-
POOL RESOURCE
INSTITUTIONS

1. Define clear group boundaries.
2. Match rules governing use of common goods to local needs and conditions.
3. Ensure that those affected by the rules can participate in modifying the rules.
4. Make sure the rule-making rights of community members are respected by outside authorities.
5. Develop a system, carried out by community members, for monitoring members' behaviour.
6. Use graduated sanctions for rule violators.
7. Provide accessible, low-cost means for dispute resolution.
8. Build responsibility for governing the common resource in nested tiers from the lowest level up to the entire interconnected system.

...DER ER
NOGET OM
SNAKKEN – ET
EKSEMPEL FRA
BOSAWAS I
NICARAGUA



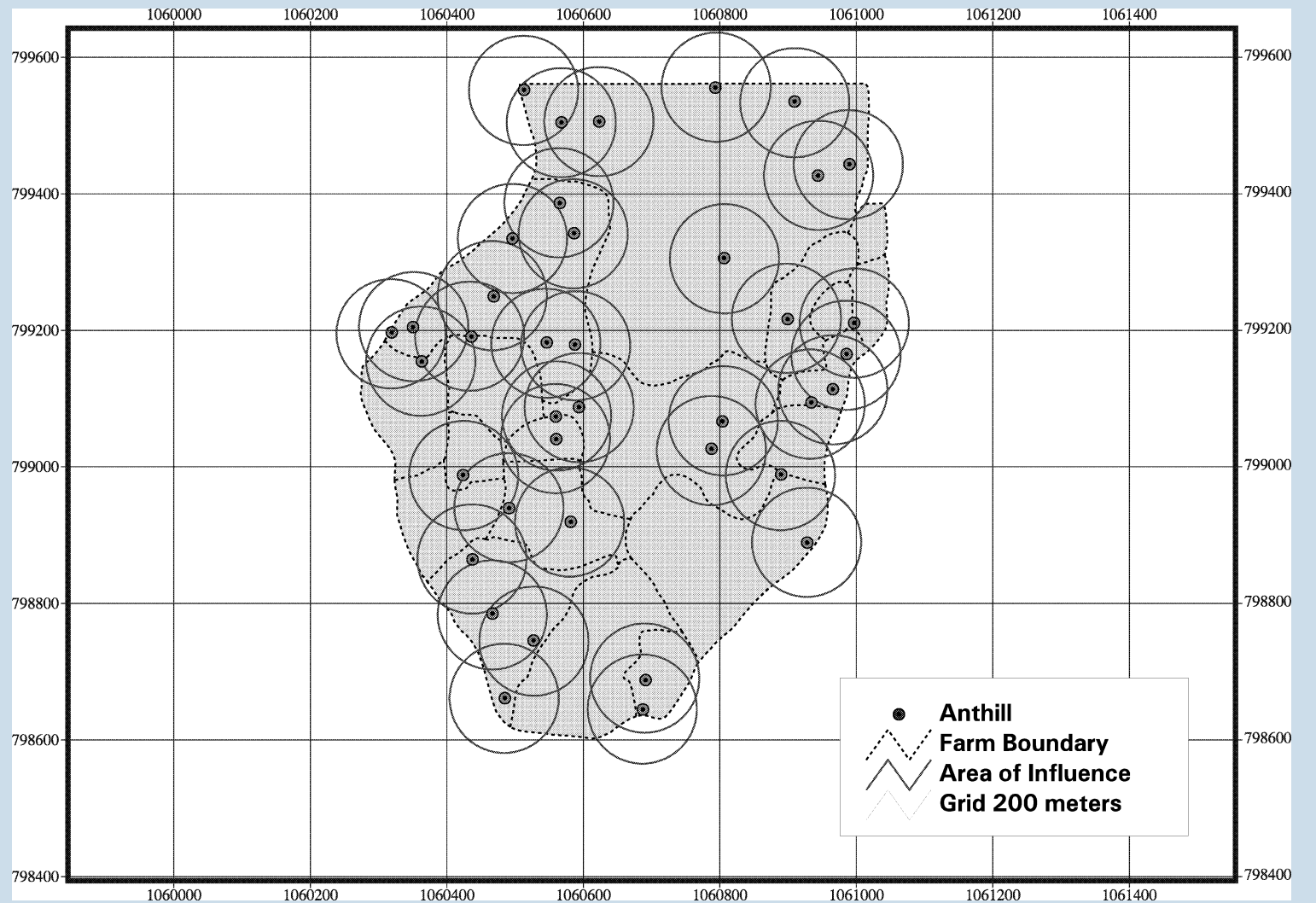
Fra: Stocks, McMahan & Taber, 2007



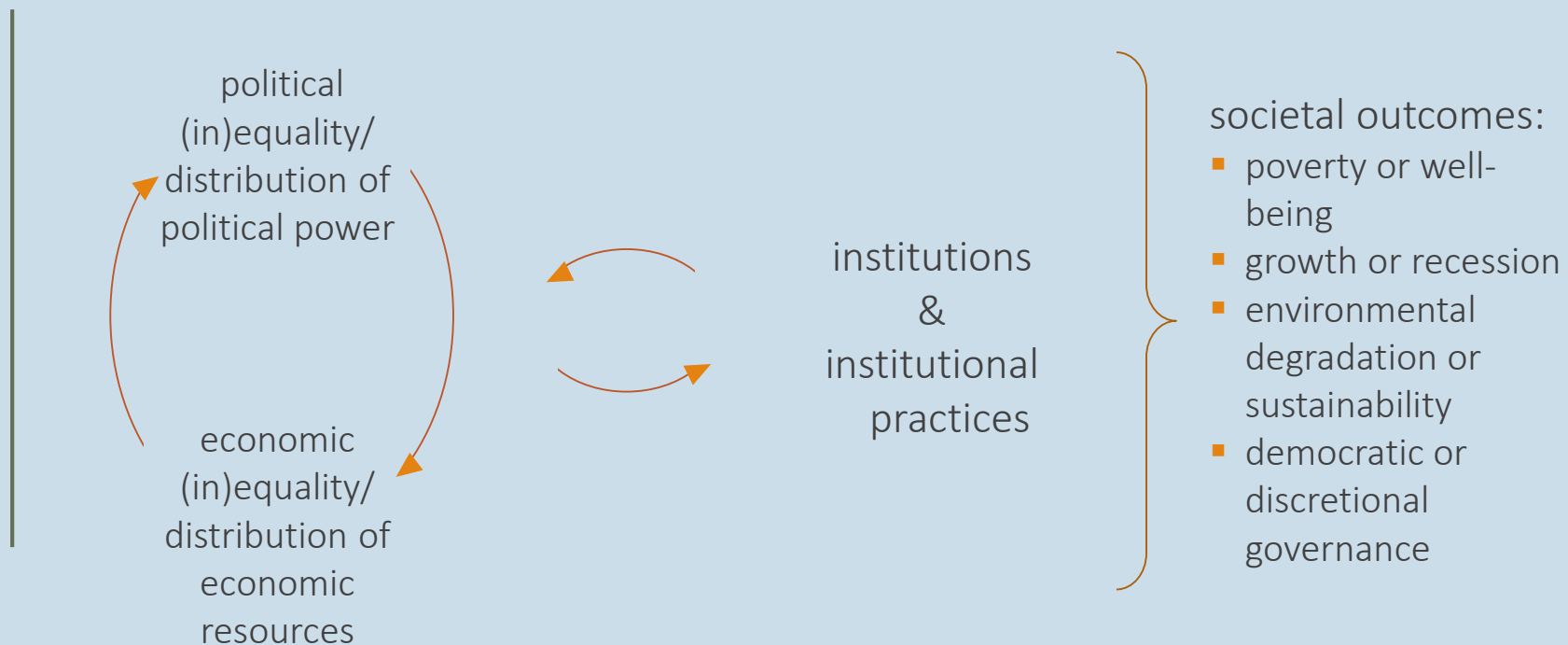


ERKENDE
INDBYRDES
AFHÆNGIGHED
& BYGGE
SAMARBEJDE
NEDEFRA

– BEKÆMPELSE AF
BLADSKÆRERMYRER
SOM ET EKSEMPEL

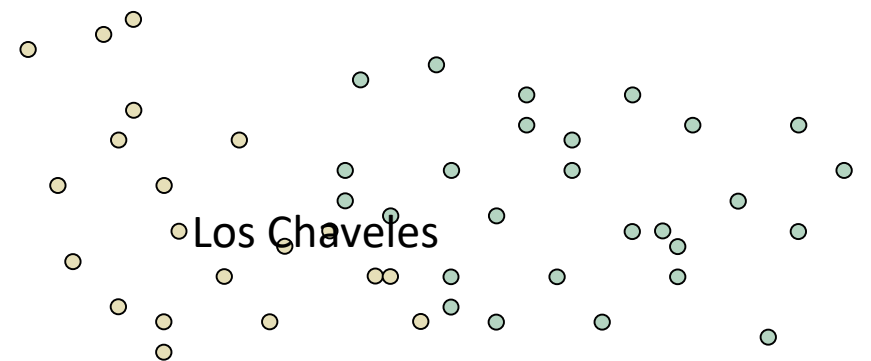
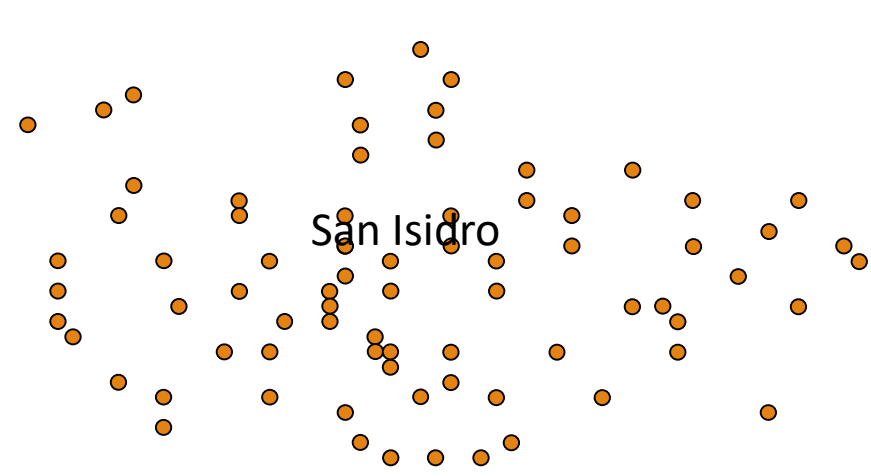
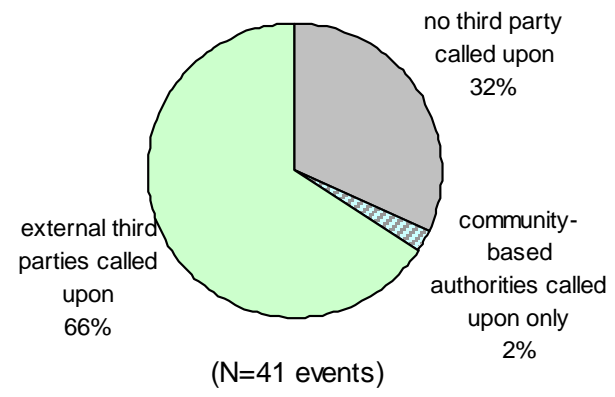
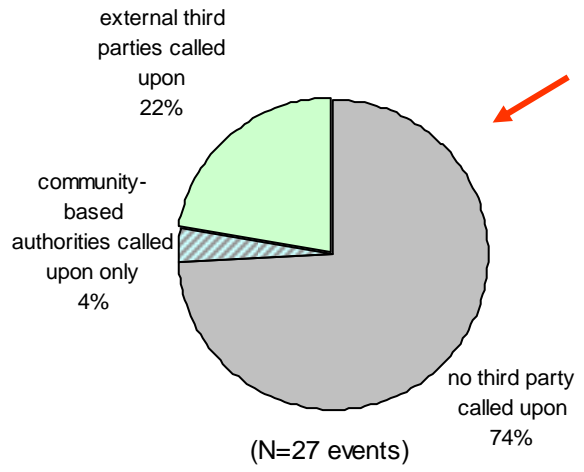


BETYDNINGEN AF ULIGHED & MAGT

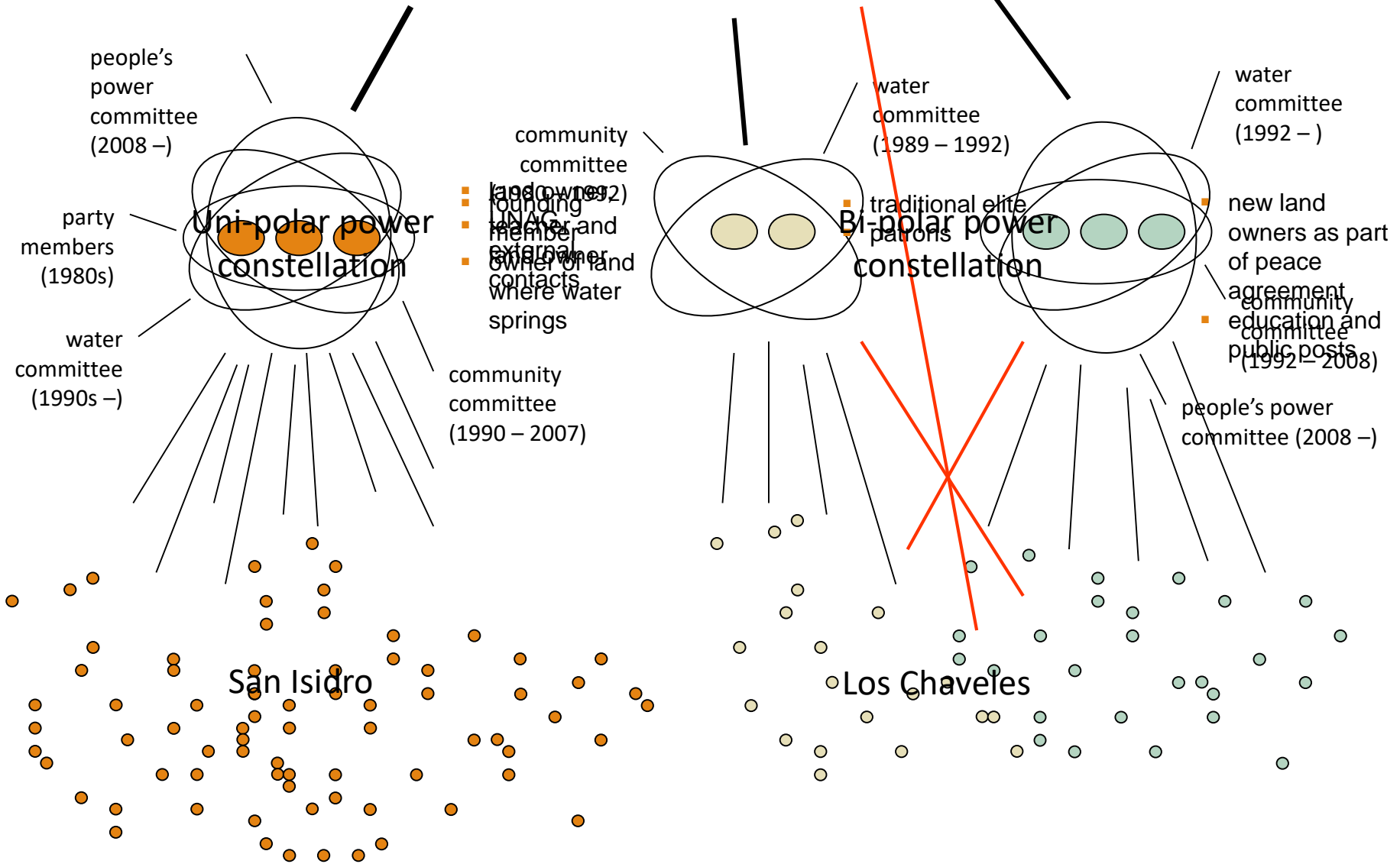


(based on e.g. Acemoglu et al., 2002; Bebbington et al., 2008; Robinson, 2010; WDR, 2006; and specifically with respect to natural resource governance: Boyce, 1994; Li and Reuveny, 2006; Clement and Meunie, 2010)

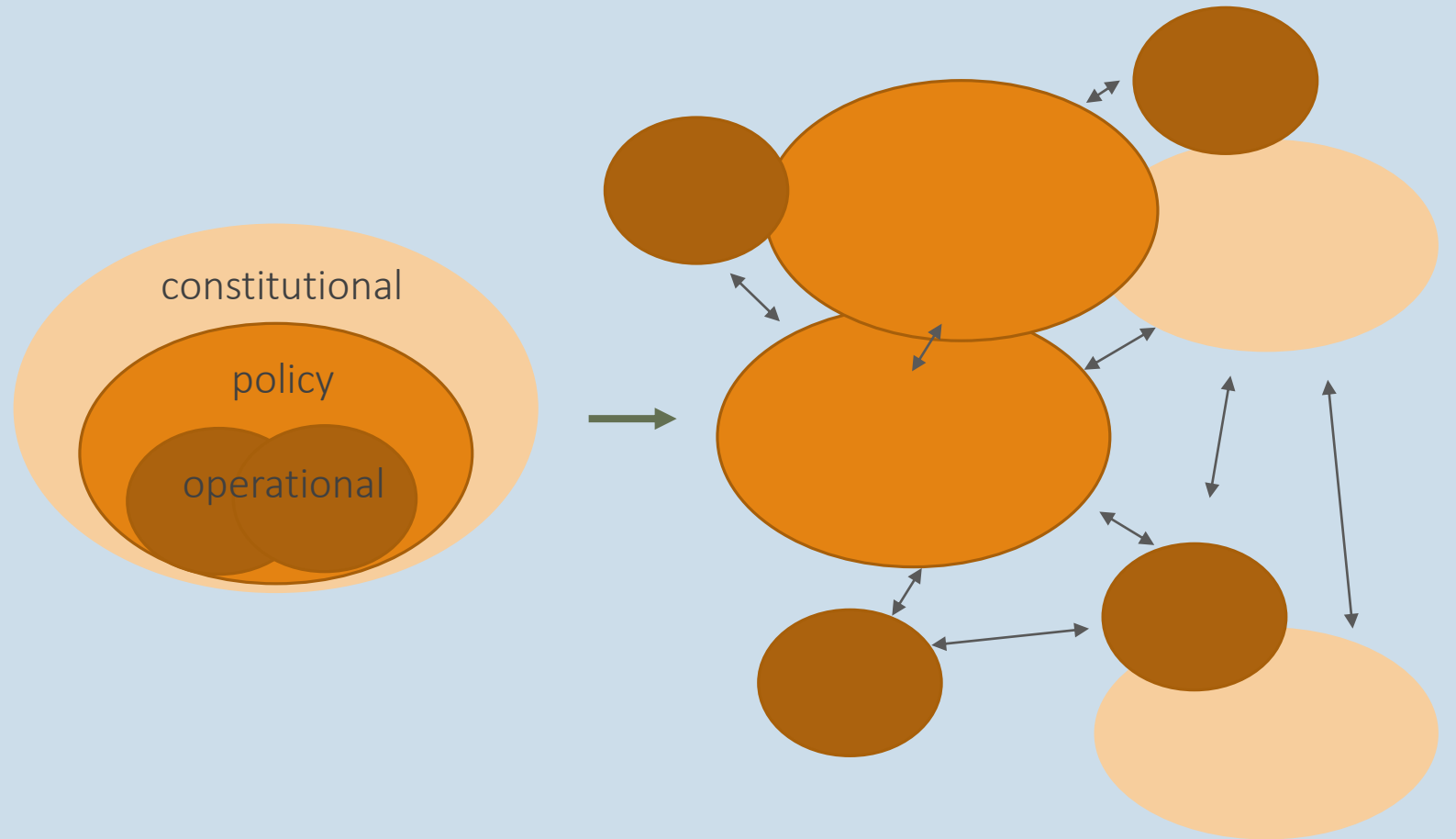
National & district water governance institutions
- governmental & non-governmental



National & district water governance institutions
- governmental & non-governmental

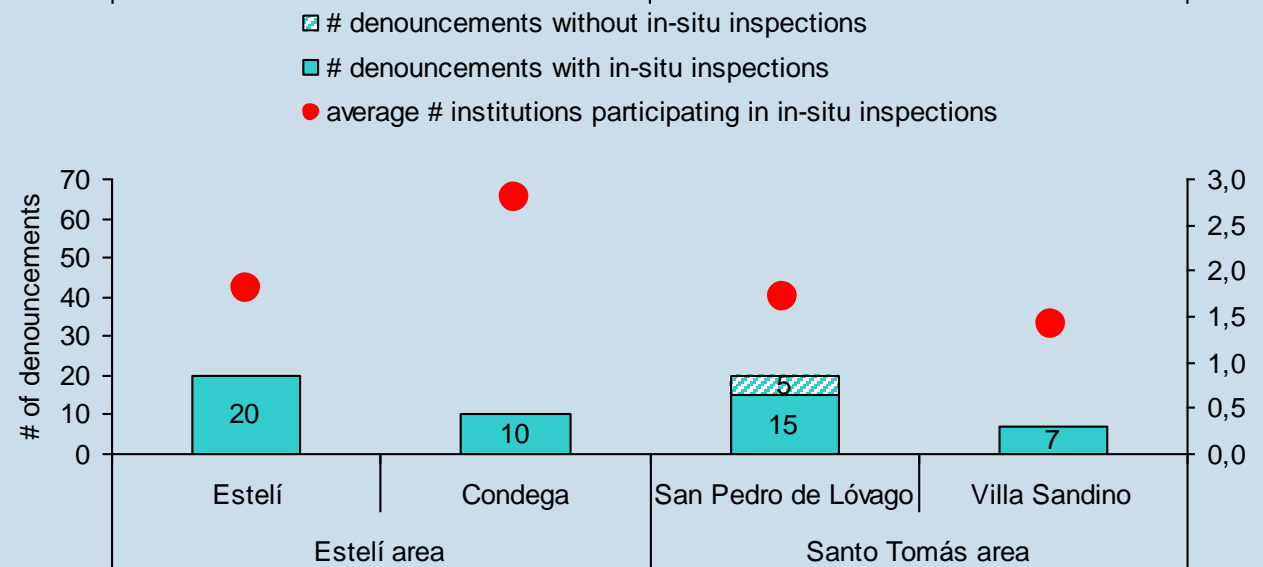
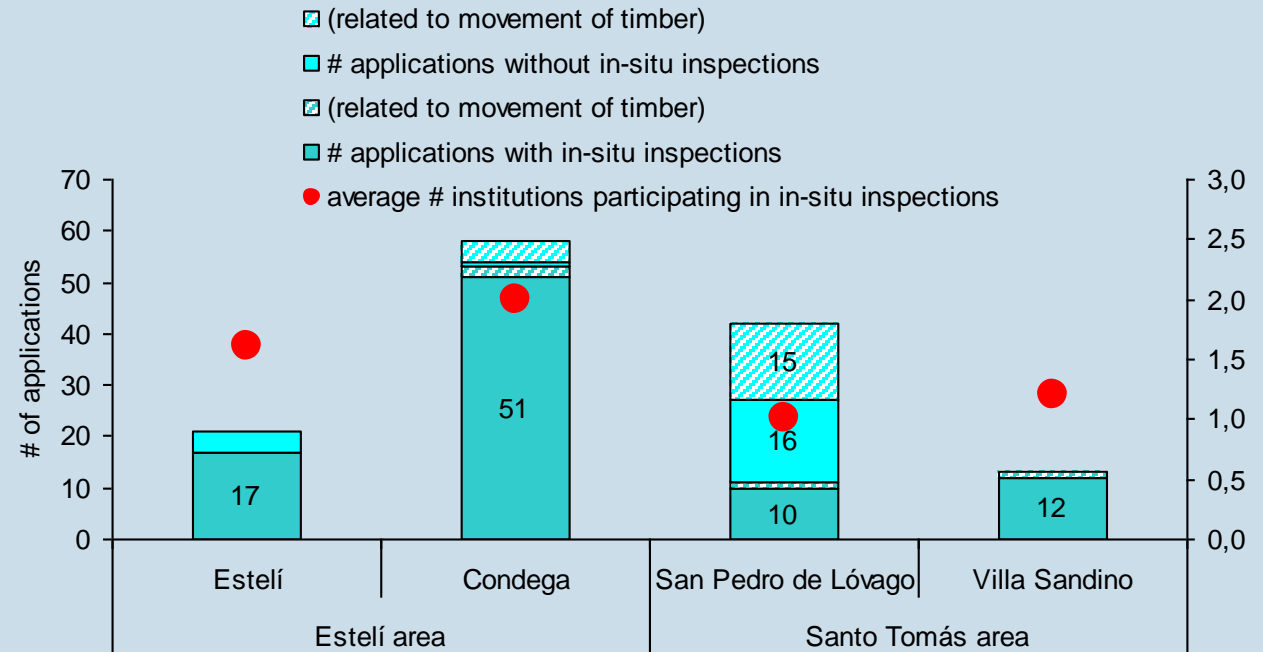


FRA 'NESTED'
TIL
'POLYCENTRIC'
GOVERNANCE



BETYDNINGEN AF
ULIGHED OG
MEDBORGERSKAB
FOR DEN
INSTITUTIONELLE
PRAKSIS

– ET EKSEMPEL FRA
NICARAGUA





Bornholms Havvind

100% lokalt- og folkeejet

